



# DANE COUNTY NATURAL HERITAGE FOUNDATION

Dedicated to the protection and preservation of natural areas in Dane County through conservation easements, land donations and education.

Spring 1998

Photo by Henry A. Koshallek



*The flowers of the cream baptisia shines in the sun on Greene Prairie. In the background, Ruth Oppedahl surveys this world-renowned prairie restoration area.*

## Greene Prairie Update

Peg Kohring of the Conservation Fund, a national nonprofit which advances land and water conservation in America, is spearheading the negotiations on behalf of the public to purchase the Harlan Sprague Dawley property for a conservancy park.

Because of its proximity to Greene Prairie and its location within the 9 Springs E-Way, there is much interest in purchasing the land for public openspace. With the Conservation Fund's leadership, an offer to purchase the area will be made to the owner by mid-May.

Funding for a purchase is comprised of public acquisition funds from the University of Wisconsin, the Dane County Conservation Fund and the State Stewardship Fund, as well as private donations from community members. In addition, the City of Fitchburg will present a referendum question on the September ballot asking the citizens of Fitchburg if they will participate financially in this purchase.

## The Vision for the Property

The plan is for the land to be restored as a conservancy park. The new park, which is located in the City of Fitchburg, would provide a link in the Nine Springs E-Way corridor and a buffer for Greene Prairie. The Capital City State Trail already exists on the south border of the property connecting the popular Glacial Drumlin Trail with the Military Ridge Trail.

Don Waller, UW Professor of Botany, and other UW faculty members are working on a design for the land, which would include restoration of land to prairie and oak savannah.

This property would be a great public amenity and a gem of a natural area. The purchase would maintain openspace and the sense of solitude that one feels when visiting Greene Prairie.

*If you would like to contribute to or receive more information on this purchase opportunity, please call the DCNHF office at (608) 258-9797.*

## What's Inside

Letter from the President	2
Conservation News	3
Love for the Land: an essay	4
Token Creek: Focusing Spotlight on Stormwater	Insert A
Token Creek: Flying High for the 4th of July	Insert B
Token Creek: Conservancy Park Acquisition	Insert B
Announcements	6
Thank You's and New Board Members	7
Memorials	8



## Letter from the President

### MISSION:

To preserve, maintain and enhance water and land areas contributing significantly to the beauty and ecological integrity of Dane County through conservation easements, land donations, and education.

Our protection efforts are directed toward natural areas and open space as well as scenic, historical, and archeological sites, which benefit water quality, wildlife habitat, biodiversity of species, and the health of ecosystems.

### BOARD OF DIRECTORS:

Michael A. Slavney, *President*  
Emily H. Earley, *Vice President - Stewardship*  
Jeanie Sieling, *Vice President - PR/Development*  
Douglas Berry, *Treasurer*  
Mark B. Williams, *Secretary*  
Lisa S. Binkley  
James Bricker  
Lloyd Eagan  
Kristine Euclide  
Larry W. Gleasman  
Brian Gutheinz  
Anne Monks  
Randall Ney  
Wayne Pauly

### PAST PRESIDENTS

Norman C. Anderson  
William G. Lunney  
Jean D. Meanwell

### EMERITUS BOARD MEMBERS:

Robert M. Bolz  
Cal DeWitt  
Harold "Bud" Jordahl

### STAFF:

Ruth Oppedahl, *Program Director*  
Jon Doré, *Token Creek Watershed Specialist*

William O'Connor, *Conservation Director*

### VOLUNTEERS:

Harriet Riley, *Membership Coordinator*  
Sarah Van Tiem, *Stormwater Specialist*  
Theresa Girardi, *Website Coordinator*

WEBSITE SPONSOR AND INTERNET PROVIDER:  
Fullfeed.com

The Board members, staff and volunteers of the Dane County Natural Heritage Foundation are still riding the wave of a very active and successful year. Three high profile projects, the Sinaiko Acquisition, the Token Creek Watershed Program, and the Greene Prairie effort have validated our conservation mission in Dane County.

The counsel of Bill O'Connor, our conservation director, brought all the loose ends together in the complex \$1 million dollar, multi-partner Sinaiko transaction. Jon Doré has continued to focus motivated citizens in Token Creek on positive, cooperative watershed protection efforts. In the name of preserving open space on land adjacent to the Arboretum's Greene Prairie, Ruth Oppedahl has worked tirelessly to channel the interests of many concerned citizens toward constructive conservation options.

The Foundation faces many more conservation challenges in 1998. It is a clear that the high quality of life and beauty of Dane County will continue to attract growth and development. Yet, there is growing awareness about the essential role that our natural heritage plays in quality of life issues. The Foundation has taken the lead in bringing disparate interests to the table to help conserve natural areas, clean water, recreational opportunities, and community character.

I must say that the Foundation has met with great success because of its diverse, active, nonpolitical Board of Directors, its excellent staff and the wonderful support of our individual and business members. So far this year, we have 500 individual and 37 business contributors. We can always use more. The stakes continue to heighten in Dane County and we hope to also strengthen our base of support accordingly. We hope to raise an additional \$10,000 in 1998. I would like to invite many more businesses to partner with us in our unique brand of collaborative conservation.

On a sad note, the Foundation will soon be losing Ruth Oppedahl, our Program Director and a "veritable institution" in the conservation community of Dane County, to a directorship at the Madeline Island Wilderness Preserve. She will be leaving at the end of June. She has already purchased her dream house outside of Washburn and we expect her to flourish in her new pristine environs. Jon Doré, who followed his wife to Madison so she could attend graduate school, is now following her to Portland, Maine to settle closer to her family. I gather that he has his priorities straight and will continue to enthusiastically protect watersheds wherever his wife leads him.

We can not replace these fine personalities, but the hiring process is underway to find qualified people to carry on our important mission. We look forward to a new era in our efforts to improve, not merely preserve our quality of life in Dane County.

Mike Slavney, President



## Conservation News

### New Director at Gathering Waters

Vicki Elkin assumes the executive director position at Gathering Waters in May. Ms. Elkin will soon finish her Masters in Land Resources at the Institute for Environmental Studies, UW-Madison and leave her PDR administrator position at the Town of Dunn. Gathering Waters, which assists land trusts, landowners and communities in their effort to protect Wisconsin's land and water resources, will be in very capable hands. We are also happy that DCNHF will continue to share our office with Gathering Waters after our July move.

### Cost Sharing for Conservation Practices

The Environmental Quality Incentives Program (EQIP) is a watershed-based, cost-sharing program aimed at addressing the most serious pollution problems first. Practices can be structural such as waterways, diversions, and barnyards or management-type practices such as tillage or nutrient management. For more information, call the Farm Service Agency, (608) 224-3767.

### New DCNHF Web Site

The next time you are surfing the web take a moment to check into the new DCNHF web site. The site features information about the DCNHF mission, current conservation projects, a list of Board and staff members and their e-mail addresses. The site describes basic land protection tools, such as the conservation easement, and provides links to related sites.



*Find our new web site at  
[www.dcnhf.org](http://www.dcnhf.org).*

We would like to thank **Theresa Girardi** for volunteering to design this web page. Theresa first learned about the DCNHF through her volunteer work at the Wilke Preserve. She works on leadership development programs and maintains a web site at the Wisconsin Association of School Boards. We are grateful to her for producing this wonderful web page.

### Continuous Conservation Reserve Program

Now is the time to consider small acreage practices with high conservation value. Filter strips along streams, new grassed waterways, riparian buffer areas and shallow water wildlife areas of 5 acres or less can be enrolled in CRP at any time under continuous sign-up provisions. Call the Farm Service Agency at (608) 224-3767.



### Getting Help to Improve Habitat

The Wildlife Habitat Incentive Program (WHIP) was set up for landowners who want to develop and improve wildlife habitat on 5 acres or more. Get technical assistance on improving woodlots, creating warm season pastures for rotational grazing, installing in-stream fish habitat structures, restoring prairie, and planting trees. For further information, call the NRCS at 224-3750.

### Woodland School Empowering Landowners

The Woodland School offers hands-on workshops, custom classes and field trips designed to help landowners understand the ecology of their property, develop management plans, restore native habitats, and much more. The school strives to enhance landowners' knowledge, skills and experience in issues of sustainable, ecologically based land management and restoration. For a catalog, contact The Woodland School, P.O.Box 572, Poynette, WI 53955 or call (608) 635-8181.



## Love for the Land: an essay by Ruth Oppedahl

I would like to share with you some of the places and people that I have been fortunate to meet in Dane County, who have shared with me their love for the land.

Ben Logan, writes in his book, *The Land Remembers*,

*"I cannot leave the land. How can I, when a thousand sounds, sights and smells tell me I am part of it?"*

When I think of what I love about Dane County, a thousand sounds, sights and smells descend on me.

☞ Let me feel the bubbling, cold crystal water...and I am kneeling next to a spring with Tom Culver in Token Creek. We've been pursued by deerflies and the relentless July sun. He has just shown me the wetland and stream that runs through his family's homestead. Now, Tom reaches into the clear spring water and pulls up two cans of soda pop to quench our thirst and tells me more about the importance of this land and water to his life.

☞ Let me smell acrid smoke of a prairie burn...and I am resting on a blackened hillside south of Blue Mounds with Julie Hayward and Donn D'Allesio. A group of prairie enthusiasts have gathered on a Sunday as part of the long-term plan to invigorate the prairie remnants found on their rolling land in the driftless region. I hear stories of resident bluebirds, red-tail hawks and of the reemergence of wonderful wildflowers like bird's foot violets, pussy toes and prairie cinquefoil. The joy of their stewardship is evident with each new discovery of a prairie plant that has returned to their land.

☞ Let me hear dry oak leaves rattling ...and I am walking the old stage coach trail left by pioneers up in Windsor on the Art Anhalt farm on a crisp October day. Golden cornfields winding across the hill are interspersed by green strips of alfalfa. I sense the pride in Art's voice as he tells how his family installed the contour fields to halt soil loss decades ago.

☞ Let me feel the pale warm sun on my cheek...and I am taking a country drive with Delma Woodburn to the old family valley near Mt. Vernon in May. Delma, a spry woman in her eighties, shows me the locations of the old log schoolhouses and the site that will be Dane County's next new park. Her family donated the land and it has recently been expanded through a thoughtful transaction by neighbor Pat Hitchcock who shares Delma's vision. Delma sits in the car and asks in her high voice, "do I want to see some Dutchman's Britches?" She tells me to hop out and go to the base of Donald Rock. I follow her directions and there they are, tiny wildflowers shaped like bloomers that lace a 6-inch stalk. The flowers carpet the forest floor with a delicate white.



*Sharing a love for the land, Mike Slavney walks with his daughters, Natalia and Andrea along a prairie path at the Wilke Preserve.*

☞ Let me hear the song of the spring peepers...and I am paddling down Lower Mud Lake. I pull off and sit next to an Indian Mound and feel the ancient rhythms of the people who came before. People have always lived here in this area, the place where the glacier stopped. It is a rich land with good water. From the Paleo-Indians up through the present day, this area is a great place to live, for farming, for wildlife, for prairies and for woods.

*(Continued on page 5)*



## Citizens Tackling Tough Stormwater Issues

### Recent Rains Result in Creek Damage

The heavy April rainfall confirmed the fears of the citizens in the Token Creek Watershed Program (TCWP). The April showers that ideally bring May flowers are also resulting in construction site and agricultural erosion. The excess sediment washing into the creek destroys aquatic habitat, increases flooding, aggravates channel erosion and perpetuates the degradation of the creek.

John Hutchinson, a local resident and former DCNHF Board member, recently surveyed flooding along the creek. "It is clear that the creek is not adequately protected against the destructive force of runoff and erosion. It is a major threat to our effort to restore Token Creek". To address this very issue the citizen group organized and hosted Stormwater Strategy Sessions on March 12th and 13th, 1998.



*(From left to right) Jeff Havlena (Vierbicher Associates), Aicardo Roa (Land Conservation Dept.), Judith Hutchinson (landowner and Fontana Sports), Bert Stitt (facilitator), Gordon Merry (landowner), and Daryl Severson (Sun Prairie Assistant Engineer) develop their work group's 3 year plan.*

involved and focusing on common ground. Through a series of brainstorming and theme consolidation exercises, the group identified a myriad of action items fitting into one of three major themes: education, ordinances, and technical solutions. Then, the group composed three year action plans on each theme.

### New Group Forms

Most significantly, an interdisciplinary team formed to pursue their 3 year plan of action. This "technical development" group has already conducted a lively and well-attended first meeting. Over the next several months, they will assemble all pertinent ordinances and identify existing best management practices. By year-end, they hope to produce an easy to understand document on feasible ways to better manage stormwater in our watershed.

### Strategy Sessions Draw a Crowd

In an approach characteristic of the TCWP, citizens brought together a multi-disciplinary team to design the sessions, raised local money and invited a broad spectrum of interests to the table. Nearly 40 people gathered at St. Alberts Church to examine the stormwater issue, brainstorm solutions and design 3 year improvement strategies. The attendees included developers, builders, farmers, engineers and representatives from the local Townships, the City of Sun Prairie, the County and the State.

As with the original watershed forum of one year ago, the session avoided accusatory and inflammatory language. Instead, the program concentrated on understanding the issue, listening to all interests

### Citizen's Unique Approach Working

The citizen's choice to approach problems collaboratively is paying off. The TCWP has quietly become a major player in local environmental decision-making. The City of Sun Prairie, builders, developers, the Corps of Engineers and the DNR have all invited the program to meet with them to work on ways to better deal with stormwater "hot spots" along Token Creek. The program is now receiving inquiries from local developers on how to best design a creek-sensitive development. Herman Krause, a local builder, appreciates that the program "does not condone finger-pointing. Instead, they are inviting all of us to participate in searching for mutually acceptable solutions and ways to avoid future problems. I've got to hand it to them, they really are raising awareness and making a difference in this watershed", said Krause.



## Token Creek Fourth of July Raffle

### Flying High in Token Creek!

The Token Creek Watershed Program (TCWP) Fourth of July committee is thrilled to announce the top prizes for this year's raffle.



Our **Grand Prize**, a pair of tickets to anywhere in the continental United States courtesy of American Airlines/American Eagle.

Our **First Prize**, a hot air balloon ride for two courtesy of Token Creek Hot Air Balloons and the citizens of the TCWP.



Our **Second Prize**, \$250 worth of North Face apparel courtesy of Fontana Sports Specialties.



Our **Third Prize**, a quarter beef dressed-out and cut to order courtesy of Tierney Farms.



### How Do I Get My Hands on a Ticket?

The \$2 raffle tickets will be available in mid-May by calling Jon Doré (608) 258-9797 or contacting any TCWP member. The drawing takes place at 1:00 PM on the Fourth of July at the Token Creek Parade south of the junction of Portage Road and State Highway 19.

## Conservancy Park in the Heart of the Watershed

### Mill Pond to Become a Wetland Park

The fate of the Token Creek mill pond wetlands may finally be settled. For the past several years, pond-side landowners and the Department of Natural Resources (DNR) have been discussing the relative merits of rebuilding or removing the old dam. Now, the mill pond residents have finally decided to sell the 69 acre wetland to the Town of Windsor and the DNR to allow for dam removal.

This acquisition will provide the community with a beautiful conservancy park enhancing wildlife and waterfowl habitat and protecting some of the most productive springs in southern Wisconsin. If the acquisition succeeds, cold, clean spring waters will once again flow freely into the creek. Resource managers will then oversee major restoration

*Creek bank, fish habitat and springs restoration in old mill pond wetlands strives to create a premier brook trout fishery.*

projects aimed at stabilizing the channel, creating aquatic habitat, and transforming the creek into a Class I native brook trout fishery. "We are very grateful to the mill pond landowners and the DNR for working through this difficult issue and arriving at a mutually acceptable solution", said Jon Doré, TCWP coordinator. "It will jump start restoration along the creek and give the entire community a premier natural area in the heart of the watershed".

A coalition of groups is rallying to help raise \$1 million by October 1998 for the mill pond wetland purchase. Federal, State, County, Township and private funds make up most of the package, however we still need to raise \$75,000. The money raised by this coalition has the potential to serve as matching funds for significant restoration grants. Please join the following groups in supporting this conservancy park acquisition: Dane County, Dane County Natural Heritage Foundation, Dane County Conservation League, Southern Wisconsin Chapter of Trout Unlimited, Town of Windsor, Wisconsin DNR, and Wisconsin River Alliance.

*The coalition is asking anyone who cares about the ecological health, the recreational opportunities and the scenic beauty of Dane County to please send in a check to support this wetland acquisition. Please send your check to "DCNHF - TC Springs" at 633 West Main Street, Madison, WI 53703 or call Jon Doré at (608) 258-9797.*



## Essay (continued)

(Continued from page 4)

And it is also a land rich in its people. In Dane County, 95% of the land is private ownership. Though the conservation of our natural heritage happens through the work of many good government agencies, a large part of our attention should also focus on ourselves and on the way

we feel about and treat the land. Aldo Leopold was one of the first to write about the private individuals responsibility to be good stewards of the land in his Land Ethic. And indeed, many of the people I have been privileged to meet are true stewards of the land.

As Ben Logan writes,

*"Once you have lived on the land, been a partner with its moods, secrets and seasons, you cannot leave. The living land remembers, touching you in unguarded moments, saying, 'I am here. You are part of me.'"*

I have been honored to be able to get to know so many good people here. And it is my hope that their intellect and dedication will be reflected not only in Dane County's land use planning process, but also in the everyday relationships we all develop with the land.

*This essay was adapted from a speech Ruth Oppedahl delivered at a Dane County Land Use Planning Workshop on December 3, 1997.*

Photo by Benson Gardner



Ruth Oppedahl has guided the DCNHF's growth and success since 1991. She will be leaving her position as Program Director in July 1998 to become Director of the Madeline Island Wilderness Preserve.

## Thanking Our 1998 Business Members

If your business appreciates our non-political and cooperative approach to conserving natural areas, open space, habitat and clean water, then join our business members listed below. Get involved and make a difference!

American Family Insurance  
Architectural Building Arts  
Bank One, Madison  
Bock Water Heaters, Inc.  
BT Squared  
Chickadee Depot  
Copy Rite  
Jim Cummings, CPA  
DEC International-Albrecht Foundation  
DeForest-Morrisonville Bank  
Eugenie Mayer Bolz Family Foundation  
Fontana Sports Specialties  
W. Jerome Frautschi Charitable Trust  
John J. Frautschi Family Foundation  
Geib Realty  
General Casualty Companies  
Kennedy Hahn TV & Appliance  
Kepler & Peyton  
Klipstein Insurance Svcs., Inc.

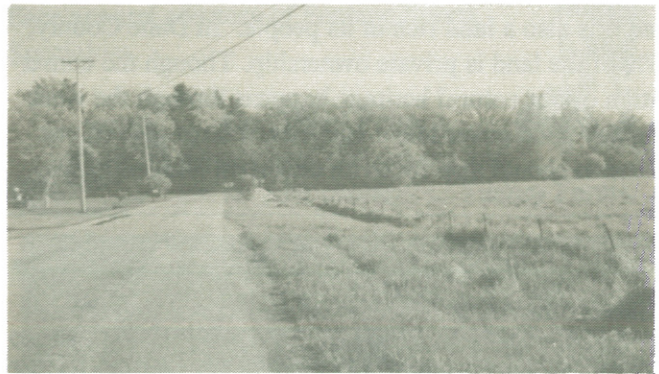
Madison Gas & Electric Fdn.  
Madison-Kipp Corporation  
Madison Newspapers, Inc.  
Marshall Erdman & Associates, Inc.  
Marshall Fields  
McFarland State bank  
Mt. Horeb Truck Parts, Inc.  
Murphy-Desmond  
National Mutual Benefit  
Promega Corporation  
Qualitemps  
Subzero Freezer Company Inc.  
Thorstad Chevrolet  
Vogel Foundation  
Webcrafters, Inc.  
Wheeler, Van Sickle and Anderson  
Williams Environmental Associates  
Yunker Real Estate Services



## Announcements

### Two Town of Dunn Home Sites for Sale

Two house lots obtained through the Sinaiko acquisition are on the market. The lots are zoned for residential use and located in the Town of Dunn on Waucheeta Trail across the road from Lake Waubesa. One lot is 9.3 acres and the other is 16.4 acres. Both sites include areas of upland woods and wetland and are located next to permanently protected land. By mid-May, the DCNHF Board will have chosen a realtor who will be handling all inquiries about these properties.



### DCNHF is Moving in June!

Our sublease from the Nature Conservancy expires in June, so we will be packing our bags and moving the Foundation to a new office just off Williamson Street. We would like to thank the Nature Conservancy staff for all their hospitality and assistance during the past three years. Our new address starting July 1, 1998 will be:

*303 S. Paterson Street, Suite 6  
Madison, WI 53703*

If you would like to assist in our move, please call 258-9797 for the specific date and times. Your muscle power or truck use will be greatly appreciated.

### New Office Equipment Needed

If you or your employer is liquidating excess equipment, we may be able to use it. We are looking for a computer workstation, a slide projector and screen, an overhead projector, TV/Video monitor, and map holders.

### "Hidden Places" Field Trip - June 6th

If you have been curious about Token Creek and the Mill Pond Wetland Area, here's a rare chance to visit with landowners, bird-watch and hike along privately owned stretches of the creek. The tour will begin at Culver Springs at 3667 Egge Road on June 6th at 9:00 AM. Bring a sack lunch and refreshments. Dress for a hike and bring bug repellent and binoculars. Note: Egge Road runs parallel to and to the north of Highway 19 and can be reached from County Trunk C or Portage Road.

### Water Resource Atlas Available

The hard work and knowledge of fifteen UW graduate students and two faculty advisors has produced, *the Water Resource Atlas to Token Creek*. The atlas contains a combination of maps, figures and text to provide a summary of current conditions, human affects on the water resources and possible future conditions. The document also describes management options. It should be mandatory reading for all involved in land use, resource management, and environmental decision-making in Token Creek. This project was possible due to a DNR Lake Planning Grant and a partnership between the DCNHF and the UW-Madison.



*Request your copy from  
the DCNHF today.*

### Mark Your Calendars for the National Land Trust Rally October 17-20, 1998

The Land Trust Alliance will hold its 11th National Rally October 17-20, 1998 at our very own Monona Terrace in Madison, WI. Join us and the more than 1000 land conservationists from across the country to learn more about land protection tools and innovative partnerships and programs. Catch up on the latest legal and legislative developments and meet people at the forefront of the national conservation movement. For an early registration packet, call LTA at (202) 638-4725.



## Special Thanks

### Thanks to Out-going Board Member, Gail Shea

We would like to express our appreciation to Gail Shea, who completed her term of service after six years. During that time, she provided wisdom and leadership as Chair of the stewardship committee and helped in our assessment of properties. She always demonstrated a deep and exemplary concern for the state of natural areas in Dane County.

### Thanks to Mike Kepler

We would like to thank Mike Kepler for his pro bono legal assistance in representing the DCNHF on behalf of the public by tracking a property of interest through a bankruptcy procedure. We greatly appreciate his expertise and professional counsel in filing all the correct forms, recording our interest and submitting objections throughout a specialized series of proceedings.

### Thanks to Mindy Habecker and Bill Rizzo

Our sincere thanks go out to Mindy and Bill of UW-Extension for conducting two strategic planning meetings with the DCNHF Board of Directors. Their assistance in planning and facilitating these meetings resulted in a list of organizational strengths and weaknesses and a list of priority issues for the Board to examine and work on in the coming year.

### Thanks to the Stormwater Session Sponsors

Fontana Sports Specialties, Steve's Wholesale Dairy Products, Mayo Corporation, MSA Professional Services, Held and Associates, Vierbicher Associates, St. Albert the Great Catholic Church, and Hovde & Hovde Associates.

### Thanks to the Stormwater Session Facilitators

Bert Stitt and Stitt Associates, Anne Forbes (Partners in Place), Tom Mickelson (DNR), Suzanne Wade (UW-Extension), George Watson, and Sarah Van Tiem.

## New Board Members

The Foundation is fortunate to have an active volunteer Board of Directors which contributes time and expertise to guide and carry out conservation programs. This quarter we welcome two new members:

### Lloyd Lewis Eagan

Ms. Eagan is currently the Director of the Bureau of Air Management at the Wisconsin Department of Natural Resources. She was Dane County's first Lakes and Watershed Coordinator and holds a master's degree in water resource management from UW-Madison.

### Brian Gutheinz

Mr. Gutheinz has been a self-employed landscape architect at the "Office of Brian Gutheinz" since 1978. He received his bachelor's degree and MLA from the Iowa State University.

## DANE COUNTY NATURAL HERITAGE FOUNDATION

### Membership Categories

- ☐ \$25.00 *Individual*
- ☐ \$35.00 *Household*
- ☐ \$50.00 *Sustaining*
- ☐ \$100.00 *Donor*

### Please send me information on:

- ☐ Volunteering
- ☐ Token Creek Watershed Program
- ☐ How to make a gift through my will
- ☐ How to make a gift of real estate

### Send to:

DCNHF  
633 W. Main St.  
Madison, WI 53703  
(608) 258-9797

Name \_\_\_\_\_

Address \_\_\_\_\_

City/Zip \_\_\_\_\_

Contributions are tax-deductible as provided by law.  
Please make checks payable to the  
Dane County Natural Heritage Foundation. Thank you!



## Memorials

### In loving memory of Roberta Oppedahl

Peg Kohring  
Emily H. Earley  
Harriet Riley  
Jon Doré/Wendy Garland  
John and Cate Harrington  
Peter McKeever  
Suzanne Wade  
Willa Schmidt/Kim Genich  
Bill Lunney/Judy Pfeifer  
Kris Euclide/Douglas Steege  
Steve Richter/Laura Commetti  
Dolly and Chuck Ledin

Bill and Roz Gausman  
Scott and Jan Zimmerman  
James Forrest Welsh  
Johanna Fabke  
Bernadine Smith  
John and Judith Hutchinson  
Carol R. Buelow  
Howard Hochman/Rose  
Meinholz  
Dave Engleson  
Carolyn and Jeff Hapeman

### In loving memory of Morris Slavney

Peter Bolstad  
City of Sun Prairie  
Kenneth and Suzanne Clark  
Emily Earley  
George and Ann Fleischli  
A. Henry Hempe  
Edward and Roberta  
Krinsky  
Lenetta A. McCampell  
Jean and Walter Meanwell

Erin O'Rear  
Ron and Cathy Rotter  
Steven J. Schaefer  
Monica Slaghs  
Milo Slaten  
Herman Torosian  
Brian Vandewalle  
Weld, Riley, Prenn  
& Ricci, S.C.

### Special Gifts

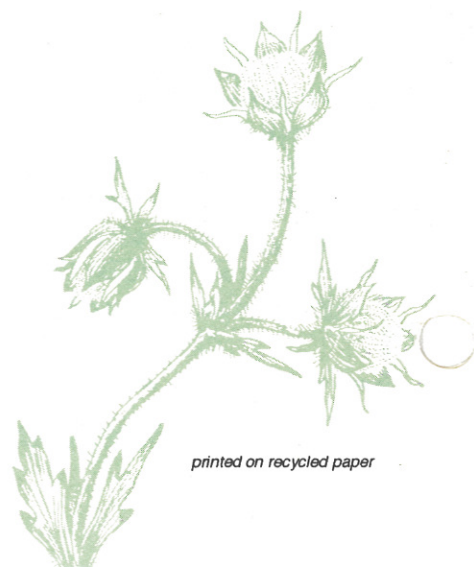
What better way to honor those who appreciate Dane County's natural beauty than by helping protect the natural areas that make this area so unique. A donation to the Dane County Natural Heritage Foundation may protect a wetland, restore a prairie or preserve a woodland. We accept donations in honor of birthdays, marriages, anniversaries as well as donations in memory of loved ones.



**DANE COUNTY NATURAL HERITAGE FOUNDATION**  
633 West Main Street  
Madison, WI 53703-2633

Address Correction Requested

NON-PROFIT  
ORGANIZATION  
U.S. POSTAGE  
PAID  
PERMIT NO.245  
MADISON, WI



printed on recycled paper