

DANE COUNTY NATURAL HERITAGE FOUNDATION

Dedicated to the protection and preservation of natural areas in Dane County through conservation easements, land donations and education.

Winter/Spring 1995



Lower Mud Lake Resource Protection Area

Photo by Doug Haag

Lower Mud Lake

Contributions Needed for First Purchase

Lower Mud Lake provides a rest stop along the migration route for thousands of birds. The uplands filter surface run-off and provide wildlife habitat. Please help us protect this resource protection area.

Contributions may be sent to:

Lower Mud Lake
c/o DCNHF
333 W. Mifflin, Suite 106
Madison, WI 53703
258-9797

Thank you!

Lower Mud Lake - Rest stop for migratory waterfowl

A 95 acre parcel of land in the Lower Mud Lake area is available to the Dane County Parks for purchase now. Your donations are needed to facilitate the purchase.

This is an exceptional opportunity to permanently protect the wetlands and uplands in this very desirable area. Lower Mud Lake is famous as a rest stop for migrating waterfowl and as a nesting site for a wide variety of birds. On a late spring day, you might observe sand hill cranes, mergansers, scaup, several kinds of rails and sandpipers. You might hear the "witchity witchity" of the common yellow throat warbler, the "Old Sam Peabody Peabody Peabody" whistle of the white-throated sparrow, and you will certainly hear the "conker-eee" of the red-wing blackbird.

The Dane County Natural Heritage Foundation has committed to raising funds to assist with this purchase. Public support is crucial, can you help us? We hope to have a list of 100 names of contributors acknowledged in our next newsletter. This is a project that appeals to all who love the outdoors, as hikers, boaters or birders. See details in sidebar above.



Photo by Ruth Oppedahl

Sherri Laier, DCNHF and Goose Pond Intern with a few of the 100 feedbags full of seed.

This winter I am cleaning the seeds at Governor Nelson State Park which houses a hammer mill and three fanning mills. It is amazing how much reduction takes place during this step. A full feedbag of asters yielded 1 1/2 cup of tiny seeds. Wild White Indigo (*Baptisia bractea*) is in short supply this year due to a beetle infestation.

Below: Volunteers spread collected seed to dry and be cleaned and measured.

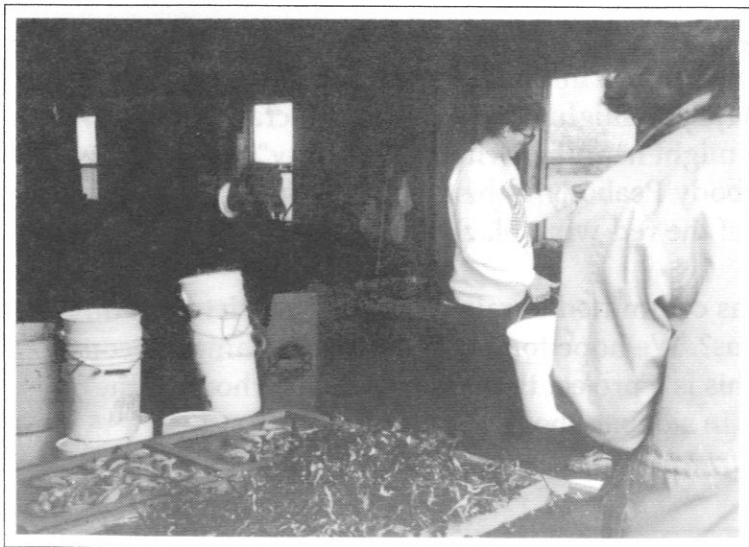


Photo by Ruth Oppedahl

Faith in a Seed

Wilke Preserve Seed Collecting

by Sherri Laier

Seed collecting was a great success this fall thanks to the help of many volunteers. We have over 40 different species of flowers and grasses to brighten Wilke Preserve this spring.

A wide variety of volunteers from every age group and background helped to insure another natural area in the state. A hearty thank you to all these people! One Saturday afternoon, thirty volunteers collected 100 lbs of Canada Wild Rye in two hours. Volunteers also collected 140 lbs of Indian Grass by hand.



Photo by Sherrie Caves

Boy Scout Troop 122 of Madison collected six feedbags full of Bee Balm. This was part of Jeff Caves' Eagle Scout project; he will be coordinating the Scouts again in the spring to help with planting Wilke Preserve.

Approximately 6 hours of collecting and 3 hours of cleaning yielded 18 lbs. of healthy seed from Langer Nature Park in the Village of Marshall. The price for this quantity from one of the prairie seed catalogs was \$6,700. After an elevation survey at Wilke Preserve to determine exact locations of dry to wet mesic areas, I will prepare the seeds for planting.

This has been a terrific learning experience for me and I anxiously await the planting this spring to bring the experience full circle.

Foundation Greet New Board Directors

We are pleased to welcome to the DCNHF board of directors: Charles Cell, Wayne Pauly, Jeanie Sieling, Deborah Slavin and Mark Williams.

Chuck Cell is an attorney in private practice in Oregon. He is a member of the State Bar of Wisconsin, past president of the Oregon Rotary Club, Chamber of Commerce and Genesis Nonprofit Senior Housing Complex. He is the 1995 Oregon Chamber Business Person of the Year.

Wayne Pauly has been with the Dane County Parks Department as Naturalist for 18 years. Before that, he worked 4 years as a UW Madison Arboretum Ranger. Wayne has a wealth of knowledge on the natural history of Dane County and the midwest, and has received national recognition for his native restoration work with volunteers.

Jeanie Sieling just completed seven years of service as Executive Assistant to Dane County Executive Rick Phelps. Her areas of specialty included land use, land acquisition, transportation and environmental issues. Before that, she was the Mayor of Fitchburg from 1985-1988. She enjoys hiking and camping and loves the out-of-doors.

Deborah Slavin worked for five years with the Wisconsin Chapter of the Nature Conservancy as Development Director. She served as a Senior Analyst for the Senate Democratic Caucus and as a special assistant to Congressman Les Aspin. Deb has a great love for the out-of-doors and our natural environment.

Restoration Workshop April 29

Madison Audubon Society is offering a one day workshop April 29 on the restoration of wetlands and prairies. Call 222-BIRD.

Mark Williams is president of Williams Environmental Associates, Inc. He conducts environmental database reviews, environmental assessments and manages evaluation of sites and environmental cleanups. Mark has published articles on delineating PCB contamination, hazard rankings and Wisconsin's environmental repair program.

With great appreciation, we also thank **Dan Erdman** for serving on the board for the past three years. His assistance in furnishing our office, involvement in many events, and good humor has been an asset to the Foundation.

February Business Reception

Thank you to longtime member American Family Insurance for hosting the 1995 reception for business contributors. Jim Addis, of the Department of Natural Resources spoke on the role of the private sector including private conservation groups, in conserving natural resources.

1995 Business Members as of March 20

AE Business Solutions
American Family Insurance Group
American TV & Appliance of Madison
Architectural Building Arts
Bensman Advertising
Bock Water Heaters
The Bruce Company
The Capital Times
Clifford & Reuter, S.C.
CUNA Mutual Insurance Group
Danny A. Tzakis & Associates
DEC International - Albrecht Foundation
Demco, Inc.
Eugenie Mayer Bolz Family Foundation
First Business Bank
Firststar Bank
Foley & Lardner
Fontana Sports Specialties, Inc.
Geib Realty
General Casualty Insurance Companies
Hausmann Insurance
John J. Frautschi Family Foundation

Kemper Securities
Kennedy Hahn TV & Appliance
Klipstein Insurance Services, Inc.
Lydia Lunney Memorial Foundation
The Madison Community Foundation
Madison Dairy Produce Company
Madison Gas & Electric Foundation
Marshall Erdman & Associates, Inc.
Marshall Field's
McFarland State Bank
National Mutual Benefit
Oscar Mayer Foods Corporation
Placon Corporation
Rayovac Corporation
Suby, Von Haden & Associates
Thorstad Chevrolet
Tri-North Builders, Inc.
W. Jerome Frautschi Charitable Trust
Webcrafters, Inc.
Wheeler Van Sickle & Anderson
Williams Environmental Associates, Inc.
Zimbrick, Inc.

----- cut and return -----

DANE COUNTY NATURAL HERITAGE FOUNDATION

Membership Categories:

- ☐ \$20.00 Individual
- ☐ \$30.00 Household
- ☐ \$50.00 Sustaining
- ☐ \$100.00 Donor

Please send me information on:

- ☐ Volunteering
- ☐ Token Creek Streambank Program
- ☐ How to make a gift through my will
- ☐ How to make a gift of real estate

Send to:

DCNHF
333 W Mifflin, Suite 106
Madison, WI 53703-2557

608-258-9797

Name _____
Address _____
City/Zip _____

Contributions are tax-deductible as provided by law. Please make checks payable to Dane County Natural Heritage Foundation. Thank you!

Would You Like to Help Plant a Prairie?

DCNHF plans to plant the Wilke Preserve prairie on Saturday, May 13 (raindate May 20). The seed has been collected by Sherri Laier and numerous volunteers last fall. One handful of seed may be the result of days of work, so we are looking for hardworkers who appreciate the value of the seed and will commit a day to the planting. Please reserve a spot by calling the DCNHF office at 258-9797.

Office Volunteer Opportunity

We need a volunteer to help in the office two half days a month. The job entails sending out renewals post cards and thank you notes. This position is critical to maintaining our membership records. If you have an interest in getting an introduction to computers for word processing, we can include training on using Microsoft Word and Access database. The schedule is flexible according to your needs. If you are interested, either with or without the computer element, please call Ruth at 258-9797.

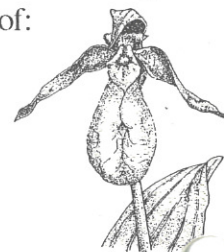
Thank you to Volunteer Seed Collectors

Joan Braune
Joan Brock
Eric Dent
Jan Hardin
Tod Highsmith
Marsha & Jessy Jaeger
Jacque Kelsey
Joe LeBouton
Larry Parnell
Alberta & Frank
Peraino
Boy Scout Troop 122
Chris Ayres
Aaron Bryden
Peter Bugg
Justin Burmeister

Jeff Caves
Shawn Eisle
Brian Golembieski
Martin Hoyard
Andrew Hoyard
Alex Jacobs
Carlos Marquez
Andy Morgan
Matt Noordsij-Jones
Andy Norderhawy
Matt Nicolai
Josh Nicolai
Nick Peliterri
Patrick Satyshur
Joel Snyder
Erik Schoster

Contributions to the Dane County Natural Heritage Foundation have been made in honor of:

Marge Gunderson's Birthday
Karen Subera's Birthday
by Jane Licht



DANE COUNTY NATURAL HERITAGE FOUNDATION
333 West Mifflin, Suite 106
Madison, Wisconsin 53703
608-258-9797

Address correction requested

Jean D. Meanwell, *President*
Michael Slavney, *Vice President - Organization*
John B. Hutchinson, *Vice President - Token Creek*
Carl E. Schultz, *Treasurer*
Jan Zimmermann, *Secretary*

Norman C. Anderson
William G. Lunney
Past Presidents

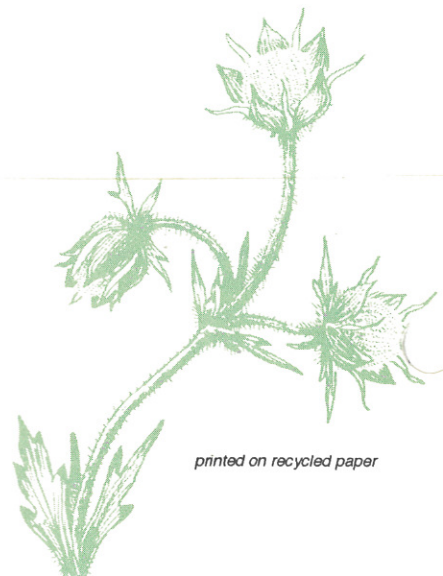
BOARD OF DIRECTORS
Robert M. Bolz
Charles P. Cell
Emily H. Earley
Kristine Euclide
Larry W. Gleasman
Richard Kalvelage
Bruce Kittle
Jane Licht, *Chair, Stewardship*
Michael J. Mathews
Randall Ney
Wayne Pauly
Jeanie Sieling
Gail B. Shea
Deborah Slavin
Jerry Smith, *Chair, PR/Development*
Mark B. Williams
Kathy Parks Yoast

Cal DeWitt
Harold "Bud" Jordahl
Emeritus Board Members

Ruth Oppedahl, *Program Director*
James Viney, *Token Creek Project Manager*

William P. O'Connor, *Conservation Director*

NON-PROFIT
ORGANIZATION
U.S. POSTAGE
PAID
PERMIT NO. 245
MADISON, WI



printed on recycled paper