

DANE COUNTY NATURAL HERITAGE FOUNDATION

A local land trust dedicated to the protection and preservation of natural areas in Dane County.

Summer 1993

Token Creek Watershed Festival

Saturday, August 28

11 a.m. - 3:00 p.m.

(Raindate August 29)

Token Creek County Park

Bring your friends and family and join us for a fun day learning about the Token Creek watershed. The event is free and open to the public.

Take the family up in a tethered hot air balloon and view the Token Creek watershed! (Limited tickets available for \$5.00/person).

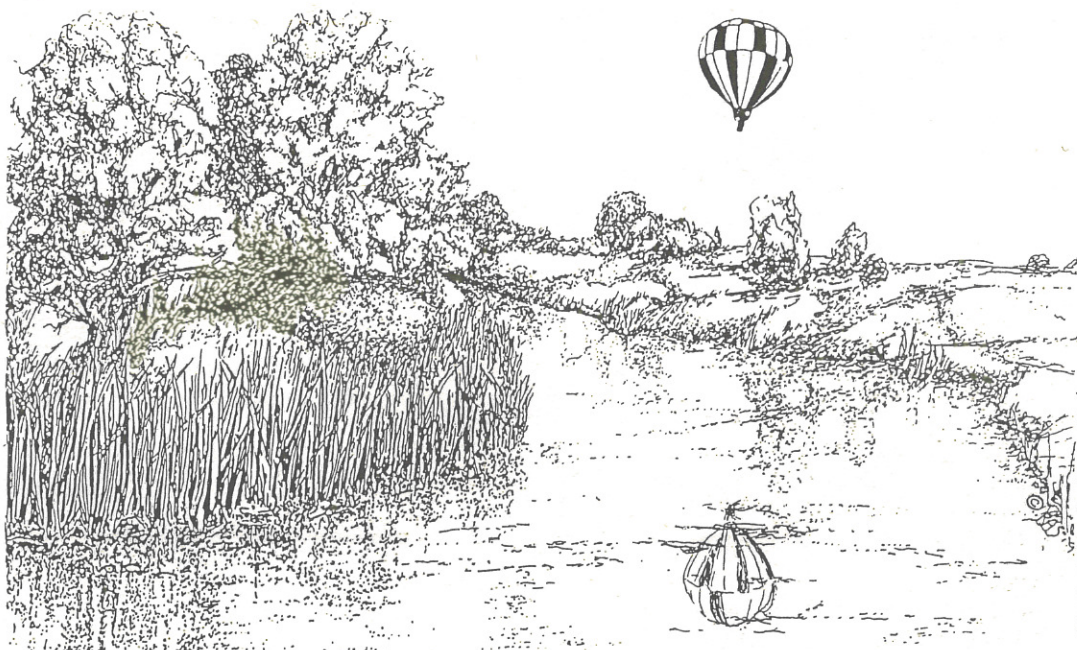
Kids will enjoy "Catching Creek Critters" and stream ecology, prairie walks and wetland talks, Aquatic Wild games. Horse-drawn hay wagon rides will be available for \$1.00.

Plan to picnic on the grounds and support DCNHF's projects by partaking in the hot dogs, chips, soda and cookies available.

Listen to the fiddling, foot-stomping bluegrass music of the "Northern Shovelers".

The Youth Conservation Corps will be honored for their work this summer on the stream. YCC crews are sponsored by Oscar Mayer Foods Corporation and the Dane County Lakes & Watershed Commission.

The Streambank Protection Project is supported by the Madison Community Foundation.



Illustrated by Randall Smith

*Token Creek
Community Watershed Festival
is co-sponsored by*

**General Casualty
Companies
and**

The Capital Times

**Interested in volunteering at the Festival?
Call Ruth or Laura at 258-9797**

**All proceeds benefit the Dane County
Natural Heritage Foundation**

Celebrating our 10th Year! 1983-1993

Fall Business Membership Drive Begins

A major portion of our financial support comes from the Dane County business community. DCNHF has 51 business members who annually contribute to our land conservation projects. This partnership allows DCNHF to match government grants and other private donations to preserve land through easements and acquisition.

Starting in September, our Board of Directors will be active in our community meeting with business representatives and sharing information about our crucial work protecting the natural beauty of Dane County.

Charitable donations to the Dane County Natural Heritage Foundation are tax-deductible by law. Thank you to current members and we look forward to continued growth with the support of local corporations.

1993 Business Members

AE Business Solutions
American Family Insurance Group*
American TV & Appliance
The Architectural Arts Company*
Bank One, Madison
Bensman Advertising
Capital City Distribution
The Capital Times*
Clifford & Reuter, S.C.*
CUNA Mutual Insurance Group
Danny A. Tzakis & Associates
DEC International - Albrecht Fdtn.
Employers Health Insurance
Eugenie Mayer Bolz Family Fdtn.*
First Business Bank
First Federal Savings Bank
Firststar Bank
Fontana Sports Specialties*
General Casualty Companies*
Goodman's Jewelers*
Hooper Construction Corporation*
Hopkins Agricultural Chemical Co.
John J. Frautschi Family Foundation*
Kemper Securities
Klipstein Insurance Services, Inc.
M & I Banks
Madison Dairy Produce Company*
Madison Gas & Electric
Marshall Erdman & Associates*
Marshall Field's
McFarland State Bank

Michael Best & Friedrich*
National Mutual Benefit
Oscar Mayer Foods Corporation*
Phil J. Hausmann & Associates
Promega Corporation*
Rayovac Corporation*
Stoughton Trailers, Inc.
Suby, Von Haden & Associates*
Sycom, Inc
Thorstad Chevrolet
Tri-North Builders, Inc.*
Vandewalle & Associates
Viobin Corporation/SPL Division
Vogel Properties
W. Jerome Frautschi Trust*
Webcrafters, Inc.*
Wisconsin Bell
Wisconsin Power & Light Fdtn.*
The Wisconsin State Journal
Woodman's Food Markets
Yunker Real Estate Services
Zimbrick, Inc.*

* Members at the \$500 level & above



Stewardship Endowment Funds Needed

In the past few months, DCNHF has been offered 4 donations of conservation easements which would protect over 250 acres of wetlands, springs and uplands in Dane County.

We'd like to accept these gifts but....

Holding conservation easements is a permanent responsibility which requires an endowment. DCNHF is unable to accept these easements unless an endowment fund can be "salted away" to care for the land in the future.

In the case where the landowner is willing to donate a conservation easement, but is unable to accompany it with a stewardship endowment donation, we'd like to be able to say that "we'll take care of it." Please consider making a contribution to our Stewardship Endowment Fund.

Welcome New Members

Helen Boley
Nancy Doll & Michael Bernhard
Jan Eddy
Tom & Mary Anne Farley
Pat Hitchcock
Peter & Ellen Johnson
Vern & Jeanne Lunde
Heather Mann
James McConnell & Martha Anderson
Gregory McGee
Dr. John T. Mendenhall
Jim Molloy
Theodore & Dorene Pittman
Keith & Karen Weiss
Jerry & Enid Weygandt
Eleanor White

In Memoriam

Mary B. Hopkins
by Walter & Jean Meanwell

Dane County Natural Heritage Foundation

Membership Categories:

- ☐ \$20.00 Individual
☐ \$30.00 Household
☐ \$50.00 Sustaining
☐ \$100.00 Donor
☐ \$_____ Stewardship Endowment Fund

Please send me information on:

- ☐ Volunteering
☐ Token Creek Streambank Program
☐ How to make a gift through my will
☐ How to make a gift of real estate

Name _____
Address _____
City/Zip _____

Send to:

Dane County Natural Heritage Foundation
333 W Mifflin, Suite 106
Madison, WI 53703-2557
608-258-9797

Contributions are tax-deductible as provided by law. Please make checks payable to Dane County Natural Heritage Foundation. Thank you!

Token Creek Youth Conservation Corps

Hard work and perseverance through high water, clouds of mosquitos and rainy days...

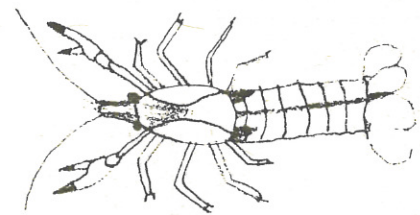
YCC crews endured a tough summer clearing box elder trees along the banks and downed trees in the streambed. The crew gained skills in resource management, team-building and knowledge of the aquatic environmental issues facing Token Creek.



Dane County Lakes & Watershed Commission Conservation Corps Back row: Assistant Crew Leader Mike Krueger, Steve Gutkowski, Elaine Weisensel, Jason Hughes. Middle row: Casey Nelson, Dylan Anderson, Crew Supervisor Jenny Voichick, Heather Bradley. Front row: Keith Ball, Mark Tuschen, Marcus Cota, Jaclyn Williams, Christina Fields, Michelle Kumbalek.



Lucas Carriola observes macro invertebrates in a stream study activity. The YCC crews took part in water chemistry sampling to determine the health of Token Creek and to predict what animals might live in the creek habitat based on temperature, the amount of dissolved oxygen present, pH and turbidity measurements.



Young crayfish. Drawing by Brian Wagner of the Oscar Mayer crew.

Oscar Mayer Food Corporation sponsored the Token Creek Youth Conservation Corps through **Community Adolescent Program**.

Back row L-R: Matt Schroeder, Chad Diring, Jason Kreger. **Front row L-R:** Michelle Rohrbeck, Lucas Carriola, Ryan Lillo, Brian Wagner, Crew Supervisor Joanna Kosowsky.



Foundation Welcomes New Board Directors



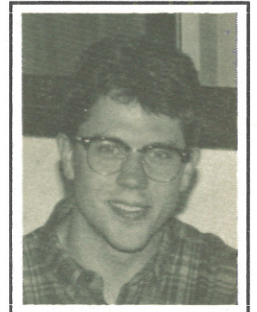
Kathy Parks Yoast works as Assistant to the Director of the UW School of Music. Kathy also served as the director of public education for the Madison's Center for Representation. She has a wealth of administration and public relations experience, including thirteen years at the Elvehjem Museum of Art.

Kathy has a bachelor's degree in philosophy from the University of South Carolina-Columbia and a M.B.A. in marketing from the University of Wisconsin-Madison. We appreciate her present work on the Foundation's 10th Anniversary Committee and the Public Relations & Development Committee.

Randall Ney is an attorney with Michael, Best & Friedrich. He received both his B.A. in English and his J.D. from the University of Iowa. His activities with the Dudgeon-Neighborhood Association and membership with the Land Institute of Salina Kansas attest to his enthusiasm for local environmental causes.

Randall, who serves on both the Stewardship Committee and the 10th Anniversary Committees has a particular interest in restoring land to native vegetation.

He is chairing the 1993 Stewardship Awards planned for October 22 at Olbrich Botanical Gardens.



Mark your calendars now for the 1993 Stewardship Awards Event October 22, 1993.

Dane County Natural Heritage Foundation

333 West Mifflin, Suite 106
Madison, Wisconsin 53703
608-258-9797

Address correction requested

Jean D. Meanwell
President
Michael Slavney
Vice President - Organization
John B. Hutchinson
Vice President - Token Creek Project
Carl E. Schultz
Treasurer
Jan Zimmermann
Secretary

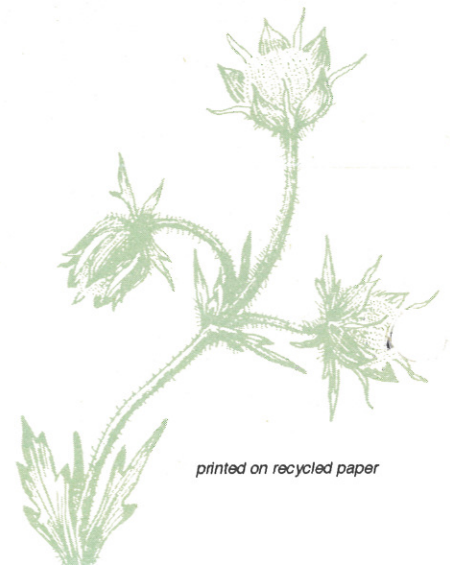
Norman C. Anderson
William G. Lunney
Past Presidents

BOARD OF DIRECTORS
Robert M. Bolz
Cal DeWitt
Emily H. Earley
Daniel W. Erdman
Kristine Euclide
Harold "Bud" Jordahl
Bea Kabler
Richard Kalvelage
Bruce Kittle
Jane Licht, Chair, Stewardship
Randall Ney
Gail B. Shea
Jerry Smith, Chair, PR/Development
Kathy Parks Yoast

Ruth Oppedahl
Program Director
Laura Tate
Administrative Assistant

William P. O'Connor
Conservation Director

NON-PROFIT
ORGANIZATION
U.S. POSTAGE
PAID
PERMIT NO. 245
MADISON, WI



printed on recycled paper